

GBJ3501 THRU GBJ3510

SINGLE-PHASE BRIDGE RECTIFIER GLASS PASSIVATED BRIDGE RECTIFIERS
 REVERSE VOLTAGE 100 to 1000 Volts FORWARD CURRENT 35 Ampere

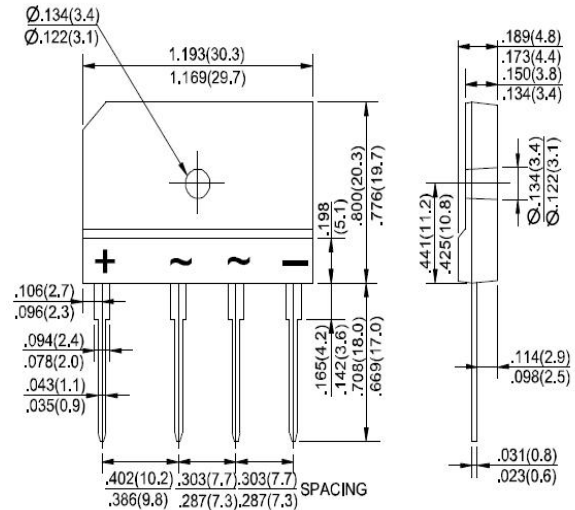
FEATURES

- ◆ Rating to 1000V PRV.
- ◆ Ideal for printed circuit board.
- ◆ Low forward voltage drop, high current capability.
- ◆ Reliable low cost construction utilizing molded plastic technique results in inexpensive product.
- ◆ The plastic material has UL flammability classification 94V-0.
- ◆ Electrically isolated base-1500 Volts

Mechanical Data

- ◆ Polarity: Symbols molded on body.
- ◆ Weight: 0.26 ounces, 7.0 grams.
- ◆ Mounting position: Any.

GBJ



Dimensions in inches and (millimeters)

MAXIMUM RATINGS AND ELECTRICAL CHARACTERISTICS

Rating at 25°C ambient temperature unless otherwise specified.

Single phase, half wave, 60Hz, resistive or inductive load. For capacitive load, derate current by 20%

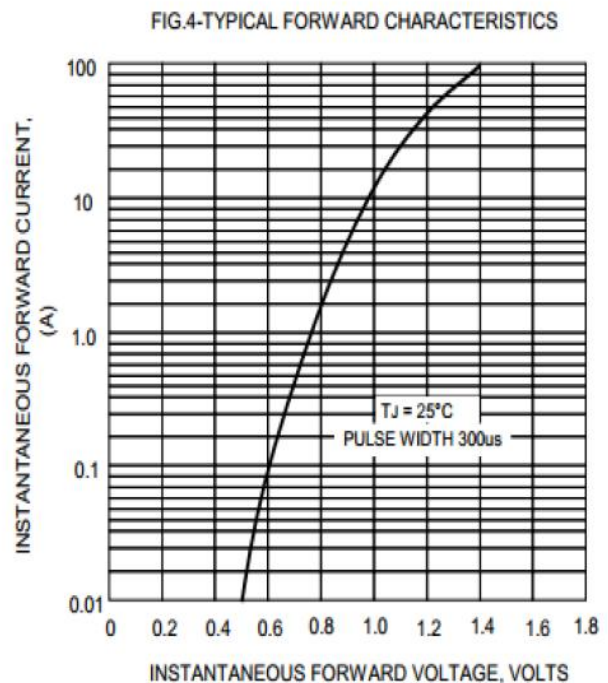
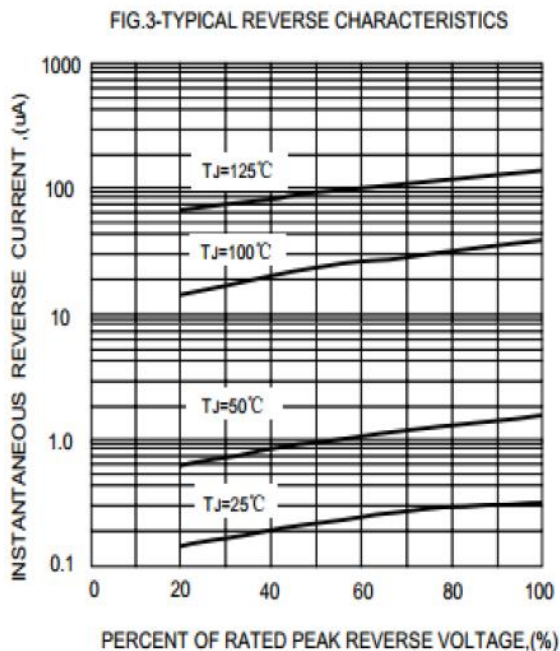
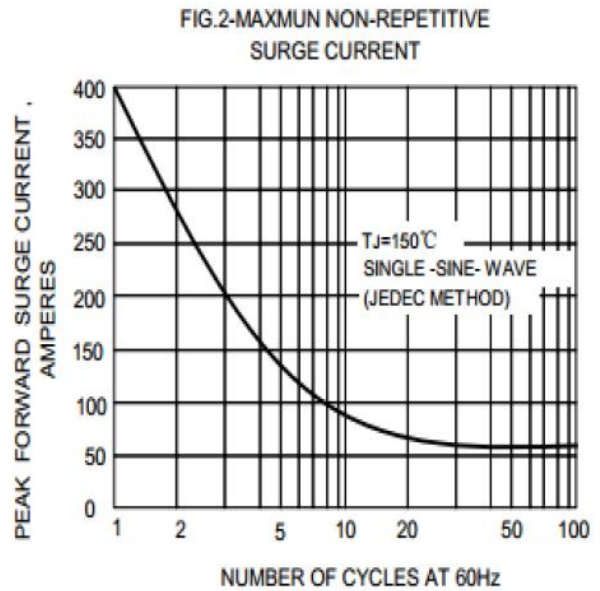
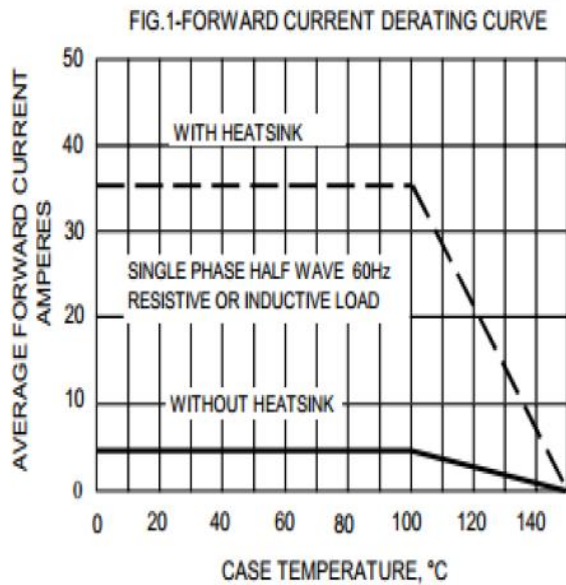
PARAMETER	SYMBOL	GBJ35005	GBJ3501	GBJ3502	GBJ3504	GBJ3506	GBJ3508	GBJ3510	UNIT
Maximum Recurrent Peak Reverse Voltage	V_{RRM}	50	100	200	400	600	800	1000	V
Maximum RMS Voltage	V_{RMS}	35	70	140	280	420	560	700	V
Maximum DC Blocking Voltage	V_{DC}	50	100	200	400	600	800	1000	V
Maximum Average Forward (with heatsink Note 2) Rectified Current @ $T_C=110^\circ C$ (without heatsink)	$I_{(AV)}$				35.0 5.0				A
Peak Forward Surge Current 8.3ms single half sine-wave superimposed on rated load (JEDEC METHOD)	I_{FSM}				400				A
Maximum forward Voltage at 17.5A DC	V_F				1.1				V
Maximum DC Reverse Current @ $T_j=25^\circ C$ at Rated DC Blocking voltage @ $T_j=125^\circ C$	I_R				10.0 500				μA
I^2t Rating for fusing ($t < 8.3ms$)	I^2t				510				A^2S
Typical Junction Capacitance per element (Note 1)	C_j				85				pF
Typical Thermal Resistance (Note 2)	$R_{\theta JC}$				0.6				$^\circ C/W$
Operating Temperature Range	T_j				-55 to +150				$^\circ C$
Storage Temperature Range	T_{STG}				-55 to +150				$^\circ C$

Note: 1. Measured at 1.0M Hz and applied reversed voltage of 4.0 VDC.
 2. Device mounted on 300mm x 300mm x 1.6mm Cu Plate Heatsink.

GBJ3501 THRU GBJ3510

SINGLE-PHASE BRIDGE RECTIFIER GLASS PASSIVATED BRIDGE RECTIFIER
 REVERSE VOLTAGE 100 to 1000 Volts FORWARD CURRENT 35 Ampere

RATING AND CHARACTERISTIC CURVES GBJ3501 THRU GBJ3510



Note: Specifications are subject to change without notice. For more detail and update, please visit our website.