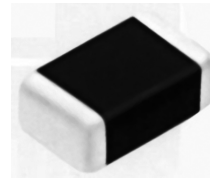


# TSVC



DISCONTINUED

**Applications**

TSVC is widely used in Notebook, PDA, Cellular Phone, MP3, Main board, LCM, HUB, Microphone, Wireless LAN, VOIP, Auto electronic and so on.

**FEATURES**

- Fast responsiveness
- Low working voltage
- Low capacitance
- Low leakage current
- Low clampin voltage
- Bi-directional
- Suit to reflow soldering ,wave soldering hand solderin.

◆ **Dimensions (unit: inches)**

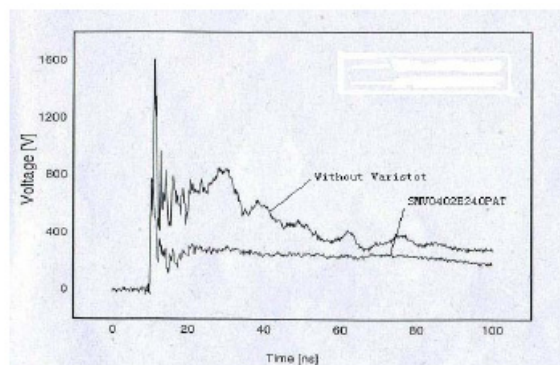
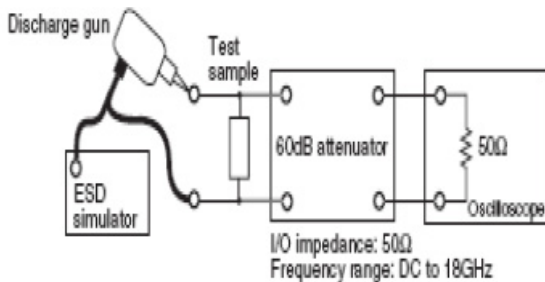
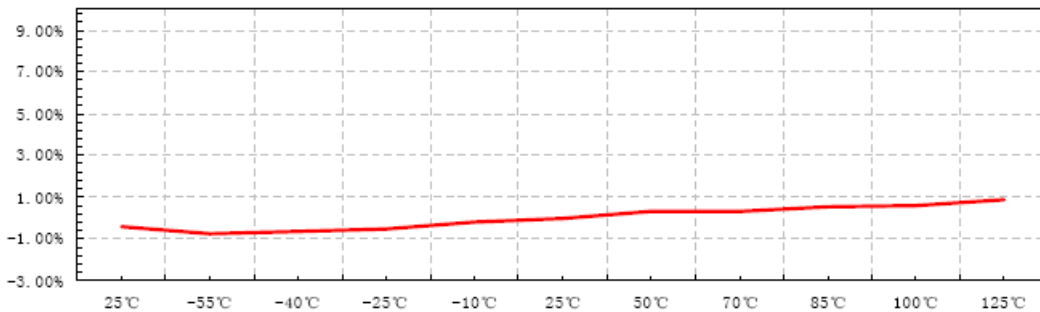
Size	Length(L)	Width(W)
0402	0.04	0.02
0603	0.06	0.03
0805	0.08	0.05
1206	0.12	0.06
1210	0.12	0.10
1808	0.18	0.08
1812	0.18	0.12
2225	0.22	0.25

**How To Order**

TSVC 0603 G 140 P C T  
 ① ② ③ ④ ⑤ ⑥ ⑦

- ① Series Name
- ② Size Code Inches.
- ③ Series Code  
E:ESD, G:Normal, H:Highpower
- ④ VDC  
140=14V, 5R6=5.6V
- ⑤ Termination  
S=Ag  
P=Ag/Ni/Sn
- ⑥ Nominal Cap  
A:0~5pF, B:5.1~10pF, C:10.1~50pF,  
D:50.1~100pF, E:100.1~500pF,  
F:500.1~1000pF, G:1000.1~1500pF, H:1500.1~2000pF
- ⑦ Package Style: T=tape C=bulk

◆ **Static Discharge Susceptibility of Some Normal Devices**



◆ **Recommend Item for System Data I/O Used**

Device description	Data Rate & Frequency	Rise time	Capacitance
USB 2.0 Data Port	480M bps	0.5~0.6ns	< 4pF
USB 1.1 Data Port	12M bps	4~20ns	5~10pF
Wireless Device	1.5M bps	75~300ns	5~10pF
RS232, IrDA1.0	115.0K	1 us~8us	10~100pF
Audio(Microphone/Speaker)	20~20KHz	0.05ms~5ms	10~1000pF

# TSVC

Part No	Working Voltage	Varistor Voltage V1mA(V)		Clamping Voltage VC(V)	Peak Current IP(A)	Transient Energy ET(J)	Capacitance CP(pF)
	VDC(V)	Min.	Max.	8/20Us	8/20Us	10/1000us	1KHz/1V
TSVC0402-E5R6PCT	5.6	6.4	11.0	20.0	1	0.01	33
TSVC0402-E5R6PDT	5.6	6.4	11.0	20.0	1	0.01	82
TSVC0402-E8R0PCT	8.0	10.0	16.0	28.0	1	0.01	33
TSVC0402-E8R0PET	8.0	10.0	16.0	28.0	1	0.01	100
TSVC0402-E120PBT	12.0	14.4	24.0	32.0	1	0.01	10
TSVC0402-E120PCT	12.0	14.4	24.0	32.0	1	0.01	33
TSVC0402-E120PDT	12.0	14.4	24.0	32.0	1	0.01	82
TSVC0402-E140PCT	14.0	16.8	28.0	55.0	1	0.01	33
TSVC0402-E140PET	14.0	16.8	28.0	55.0	1	0.01	100
TSVC0402-E180PCT	18.0	21.6	36.0	75.0	1	0.01	33
TSVC0402-E240PAT	24.0	102.0	138.0	240.0	1	0.01	2.5
TSVC0402-E380PAT	38.0	50.0	80.0	160.0	1	0.01	4.5
TSVC0603-E5R5PFT	5.5	6.4	11.0	20.0	1	0.01	820
TSVC0603-E5R5PDT	5.5	6.4	11.0	20.0	1	0.01	75
TSVC0603-G9R0PFT	9.0	10.8	15.3	25.0	30	0.1	2—180000pF “Reference Capacitor” is For references.
TSVC0603-G110PET	11.0	13.2	18.7	30.0	30	0.1	
TSVC0603-E140PDT	14.0	20.4	27.6	55.0	1	0.01	82
TSVC0603-E140PCT	14.0	20.4	36.8	55.0	1	0.01	33
TSVC0603-E180PBT	18.0	27.2	36.8	75.0	1	0.01	10
TSVC0603-G180PET	18.0	21.6	27.0	54.0	30	0.1	2—180000pF “Reference Capacitor” is For references.
TSVC0603-G220PET	22.0	26.4	33.0	65.0	30	0.1	
TSVC0603-E240PAT	24.0	102.0	138.0	240.0	1	0.01	2.5
TSVC0603-G260PET	26.0	31.2	39.0	75.0	30	0.1	2—180000pF “Reference Capacitor” is For references.
TSVC0603-G300PET	30.0	36.0	45.0	85.0	30	0.1	
TSVC0805-G5R6PFT	5.6	6.4	10.1	15.5	40	0.1	
TSVC0805-G9R0PFT	9.0	10.8	15.3	25.0	40	0.1	
TSVC0805-G110PET	11.0	13.2	18.7	30.0	40	0.1	
TSVC0805-G140PET	14.0	16.8	23.8	40.0	40	0.1	
TSVC0805-G180PET	18.0	21.6	27.0	54.0	40	0.1	
TSVC0805-G220PET	22.0	26.4	33.0	65.0	40	0.1	
TSVC0805-G260PET	26.0	31.2	39.0	75.0	40	0.1	
TSVC0805-G300PET	30.0	36.0	45.0	85.0	40	0.1	
TSVC1206-G9R0PFT	9.0	10.8	15.3	25.0	100	1.0	
TSVC1206-G140PET	14.0	16.8	23.8	40.0	100	1.0	
TSVC1206-G180PFT	18.0	21.6	27.0	54.0	100	1.0	
TSVC1206-G220PFT	22.0	26.4	33.0	62.0	100	1.0	2—180000pF “Reference Capacitor” is For references.
TSVC1206-G240PET	24.0	28.8	36.0	67.0	100	1.0	
TSVC1206-G260PET	26.0	31.2	39.0	73.0	100	1.0	
TSVC1206-G300PET	30.0	36.0	45.0	85.0	100	1.0	
TSVC1206-G390PET	39.0	46.8	58.5	105.0	100	1.0	
TSVC1206-G560PET	56.0	67.2	84.0	150.0	100	1.0	
TSVC1206-G750PET	75.0	90.0	105.0	200.0	100	1.0	
TSVC1210-G140PGT	14.0	16.8	23.8	40.0	250	1.5	
TSVC1210-G180PGT	18.0	21.5	27.0	51.0	250	1.5	
TSVC1210-G220PGT	22.0	26.4	33.0	62.0	250	1.5	
TSVC1210-G270PGT	27.0	32.4	40.5	75.0	250	1.5	
TSVC1210-G300PGT	30.0	36.0	45.0	85.0	250	1.5	
TSVC1210-G450PGT	45.0	54.0	67.5	125	250	1.5	
TSVC2220-H220PXT	22.0	26.4	33.0	62.0	1200	7.8	
TSVC2220-H270PXT	27.0	32.4	40.5	75.0	1200	7.8	
TSVC2220-H300PXT	30.0	36.0	45.0	85.0	1200	7.8	

Note: Specification are subject to change without notice. For more detail and update, please visit our website.