

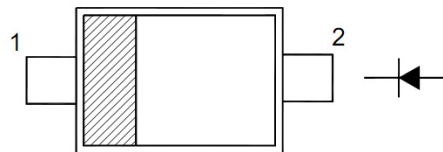
**BAV19W, BAV20W, BAV21W****Silicon Epitaxial Planar Diode High Voltage Switching Diode****FEATURES**

Fast switching speed

Surface mount package ideally suited for automatic insertion

**PINNING**

PIN	DESCRIPTION
1	Cathode
2	Anode



Top View

Marking Code:

BAV19W: A8

BAV20W: T2

BAV21W: T3

Simplified outline SOD-123 and symbol

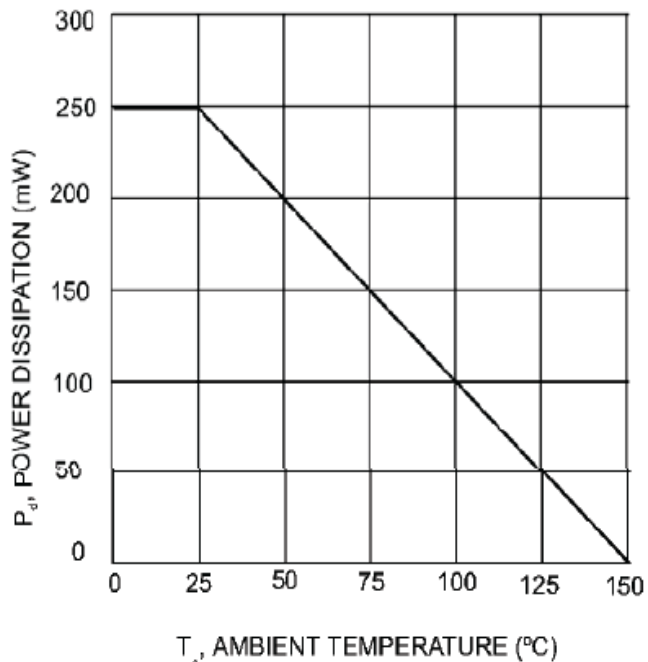
**MAXIMUM RATINGS AND CHARACTERISTICS****Absolute Maximum Ratings (Ta = 25°C)**

PARAMETER		SYMBOL	VALUE	UNIT
Repetitive Peak Reverse Voltage	BAV19W BAV20W BAV21W	$V_{RRM}$	120 200 250	V
Reverse Voltage	BAV19W BAV20W BAV21W	$V_R$	100 150 200	V
Average Rectified Forward Current		$I_F (AV)$	200	mA
Forward Continuous Current		$I_{FM}$	400	mA
Repetitive Peak Forward Current		$I_{FRM}$	625	mW
Non-repetitive Peak Forward Surge Current	at t = 1 ms at t = 1 s	$I_{FSM}$	2.5 0.5	A
Power Dissipation		$P_d$	250	mW
Operating and Storage Temperature Range		$T_j, T_{stg}$	- 65 to + 150	°C

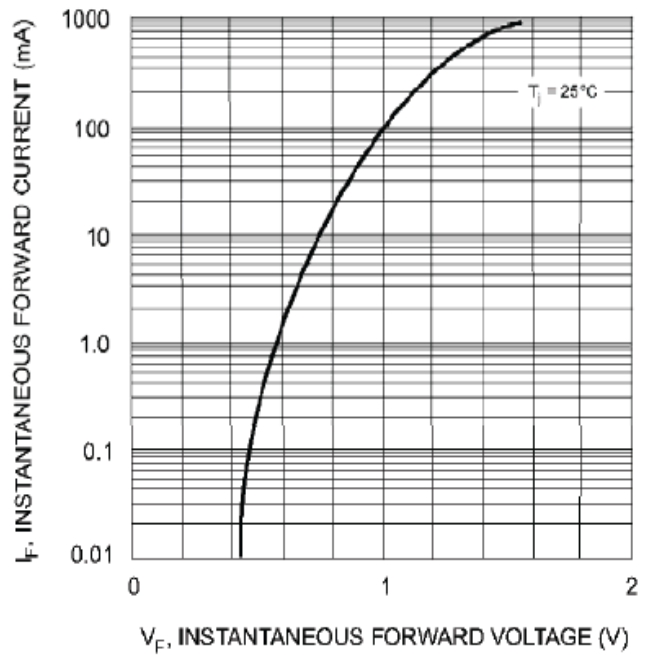
**Characteristics at Ta = 25°C**

PARAMETER		SYMBOL	Min.	Max.	UNIT
Forward Voltage at $I_F = 100$ mA at $I_F = 200$ mA		$V_F$	- -	1 1.25	V
Reverse Breakdown Voltage at $I_R = 100$ $\mu$ A	BAV19W BAV20W BAV21W	$V_{(BR)R}$	120 200 250	- - -	V
Reverse Current at $V_R = 100$ V at $V_R = 150$ V at $V_R = 200$ V	BAV19W BAV20W BAV21W	$I_R$	- - -	100 100 100	nA
Total Capacitance at $V_R = 0$ V, f = 1 MHz		$C_T$	-	5	pF
Reverse Recovery Time at $I_F = I_R = 30$ mA, $I_{TR} = 0.1I_R$ , $R_L = 100$ $\Omega$		$t_{rr}$	-	50	ns

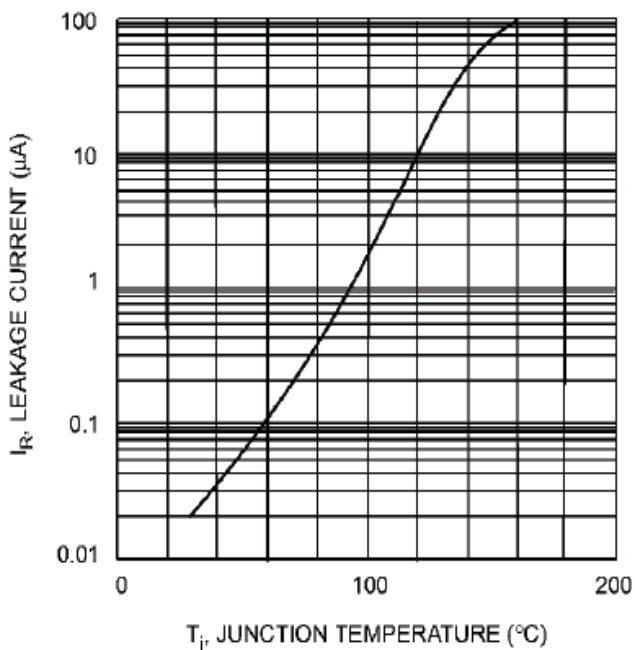
RATINGS AND CHARACTERISTIC CURVES BAV19W, BAV20W, BAV21W



$T_A$ , AMBIENT TEMPERATURE (°C)  
Fig. 1 Power Derating Curve



$V_F$ , INSTANTANEOUS FORWARD VOLTAGE (V)  
Fig. 2 Typical Forward Characteristics

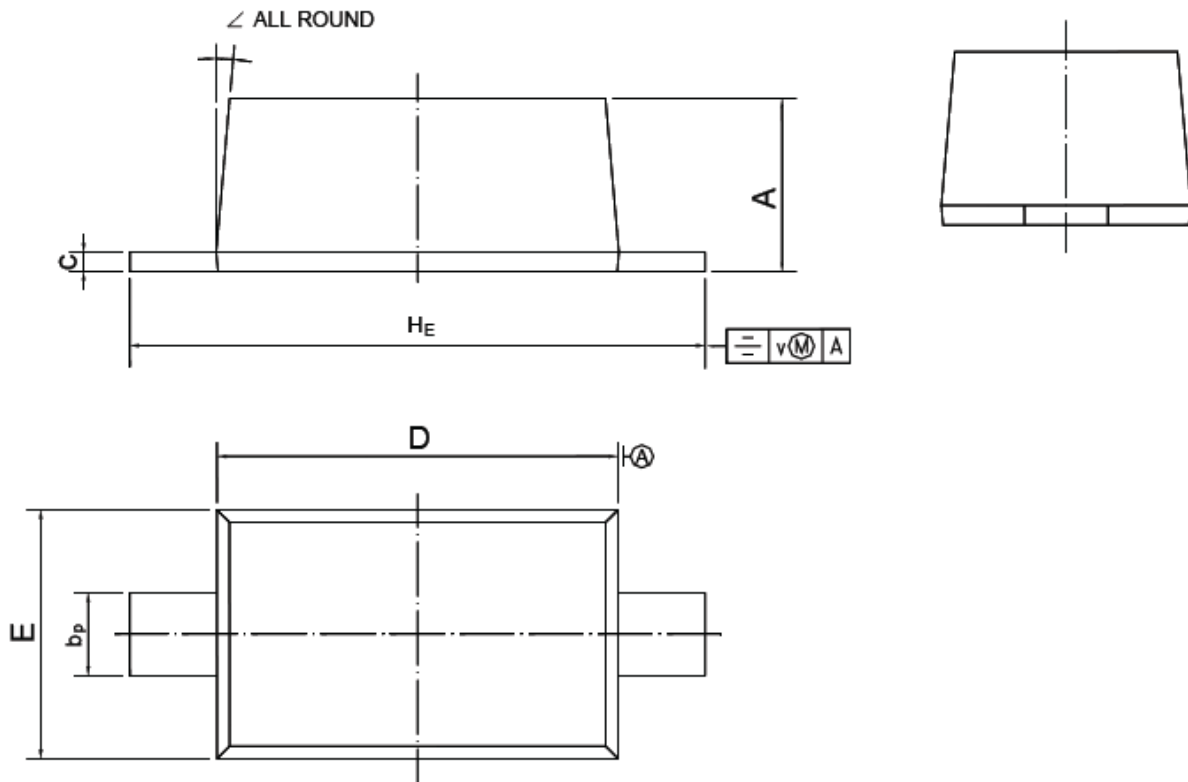


$T_j$ , JUNCTION TEMPERATURE (°C)  
Fig. 3 Leakage Current vs Junction Temperature

RATINGS AND CHARACTERISTIC CURVES BAV19W, BAV20W, BAV21W

SOD-123 PACKAGE OUTLINE

Plastic surface mounted package; 2 leads



UNIT	A	$b_p$	c	D	E	$H_E$	v	$\sphericalangle$
mm	1.15 1.05	0.6 0.5	0.135 0.100	2.7 2.6	1.65 1.55	3.85 3.55	0.2	5°

Note: Specification are subject to change without notice. For more detail and update, please visit our website.